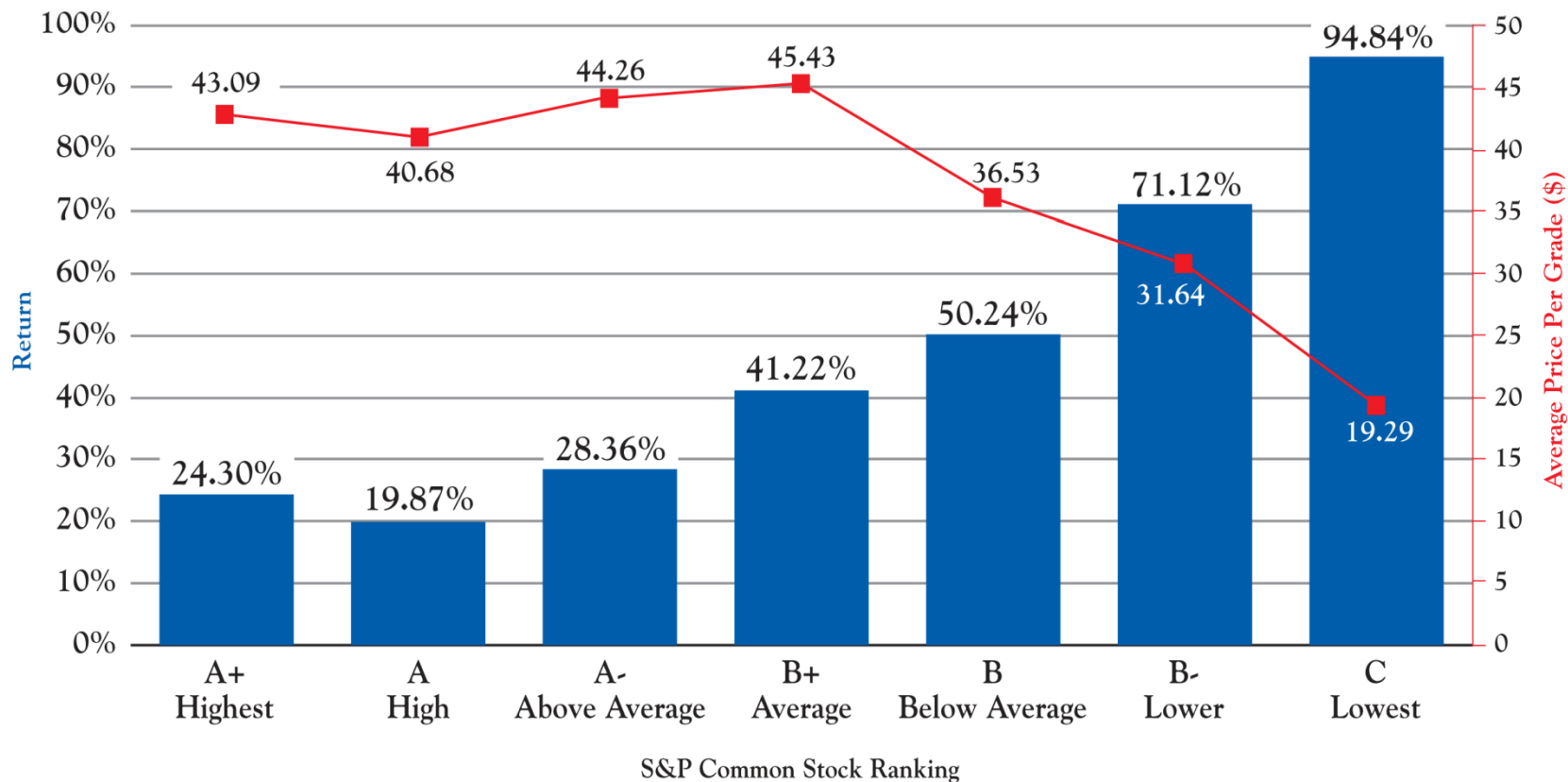


## Average total return and average stock price of the Russell 1000 Index by S&P Common Stock Ranking

12/31/2008 – 12/31/2009



Source: Navellier Applied Research, FactSet. Chart is for discussion purposes only and is plotting Russell 1000 constituent performance as grouped by S&P common stock rating. Past performance is no assurance of future results. The Russell 1000 Index measures the performance of the 1000 largest companies in the Russell 3000 Index which represents approximately 92 percent of the total market capitalization of the Russell 3000 Index. It is not possible to invest directly in an index. Please see index description on reverse side.

---

**Russell 1000 Index Description:**

The Russell 1000 Index measures the performance of the 1,000 largest companies in the Russell 3000 Index, which represents approximately 92% of the total market capitalization of the Russell 3000 Index. As of the latest reconstitution, the average market capitalization was approximately \$14.1 billion; the median market capitalization was approximately \$4.1 billion. The smallest company in the index had an approximate market capitalization of \$1.6 billion.